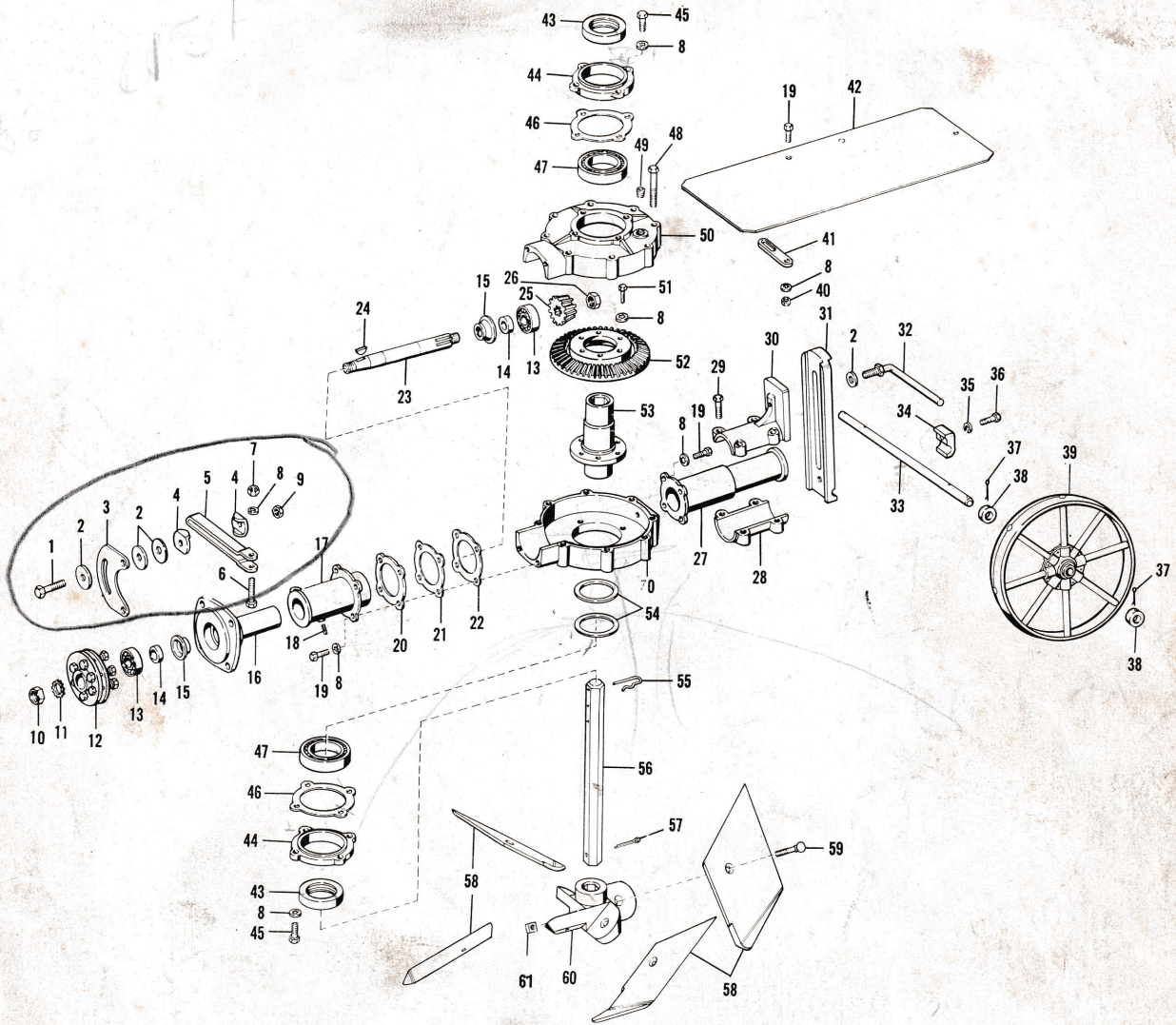


# ILLUSTRATED PARTS LIST

ROTARY PLOW

 Model Number MA300  
 Effective Date 12/1/69  
 Form Number 14618P1


<u>ITEM NO.</u>	<u>PART NO.</u>	<u>DESCRIPTION</u>
1	180190	1/2 x 3 Hex. Hd. Bolt
2	120390	9/16 Flat Washer
3	12523P1	Adjusting Bracket
4	13407P1	Adjusting Washer
5	12524P1	Adjusting Handle
6	180132	3/8 x 2 1/4 Hex. Hd. Bolt
7	120377	3/8 Hex. Nut
8	138542	3/8 Lockwasher
9	120238	1/2 Hex. Jam Nut
10	13419P1	5/8 Nut
11	138557	5/8 Lockwasher
12	10104A1	Attachment Clutch Assembly
13	13594P1	Roller Bearing Cone
	13595P1	Roller Bearing Race
14	12987P1	Oil Seal
15	3151P1	Oil Seal Retainer



<u>ITEM NO.</u>	<u>PART NO.</u>	<u>DESCRIPTION</u>
16	12747P1	Drive Shaft Housing
17	12748P1	Swivel Casting
18	9411027	Lube Fitting
19	180122	3/8 x 1 Hex. Hd. Bolt
20	12770P1	Gear Housing Gasket
21	12758P1	Adjusting Shim .005
22	13887P1	Adjusting Shim .020
23	13082P1	Drive Shaft
24	124549	#9 Woodruff Key
25	5309P1	Bevel Pinion Gear
26	13412P1	5/8 Locknut
27	5331P1	Gear Housing Extension
28	5328P1	Bracket Cap
29	180126	3/8 x 1 1/2 Hex. Hd. Bolt
30	5326P1	Wheel Bracket Swivel
31	5303P1	Wheel Bracket
32	5325P1	Wheel Bracket Clamp Screw
33	5311P1	Axle
34	5304P1	Axle Clamp
35	120384	1/2 Spring Lockwasher
36	180175	1/2 x 1 1/4 Hex. Hd. Bolt
37	137253	3/16 x 1 5/8 Cotter Pin
38	12519P1	Thrust Collar
39	5327A1	Depth Wheel
40	120377	3/8 Hex. Nut
41	13430P1	Front Brace
42	5324P1	Dirt Shield
43	13593P1	Oil Seal
44	5308P1	Bearing Cap
45	180120	3/8 x 3/4 Hex. Hd. Bolt
46	5317P1	Shim .005
	14230P1	Shim .020
47	13421P1	Roller Bearing Cone
	13422P1	Roller Bearing Race
48	180134	3/8 x 2 1/2 Hex. Hd. Bolt
49	13408P1	1/2 Sq. Hd. Pipe Plug
50	13535P1	Gear Housing, Upper
51	180121	3/8 x 7/8 Hex. Hd. Bolt
52	5315P1	Bevel Gear
53	5306P1	Bevel Gear Hub
54	5413P1	Adjusting Shim
55	13466P1	Depth Adjusting Pin
56	5310P1	Rotor Shaft
57	103422	1/4 x 2 1/4 Cotter Pin
58	13468P1	Spade Blade
59	11709P1	1/2 x 1 1/2 Plow Bolt
60	13467P1	Rotor Hub
61	125536	1/2 Sq. Nut
70	13534P1	Gear Housing, Lower